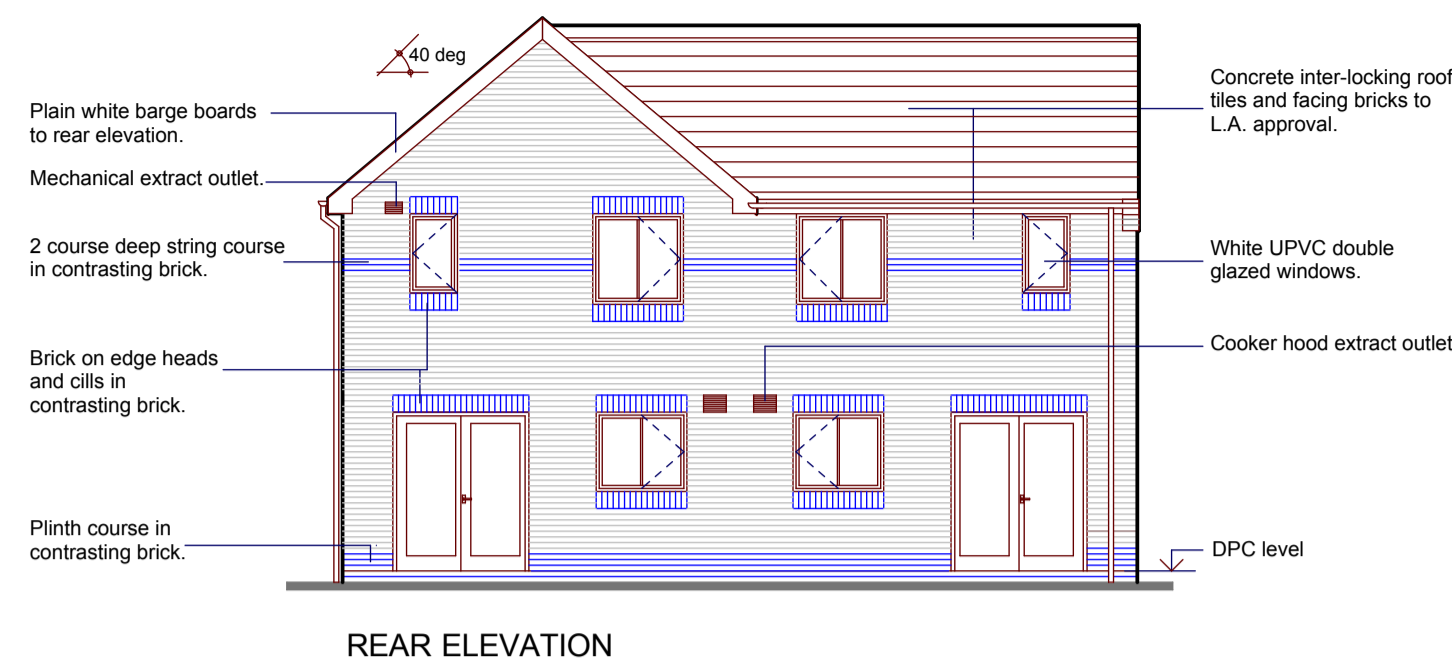
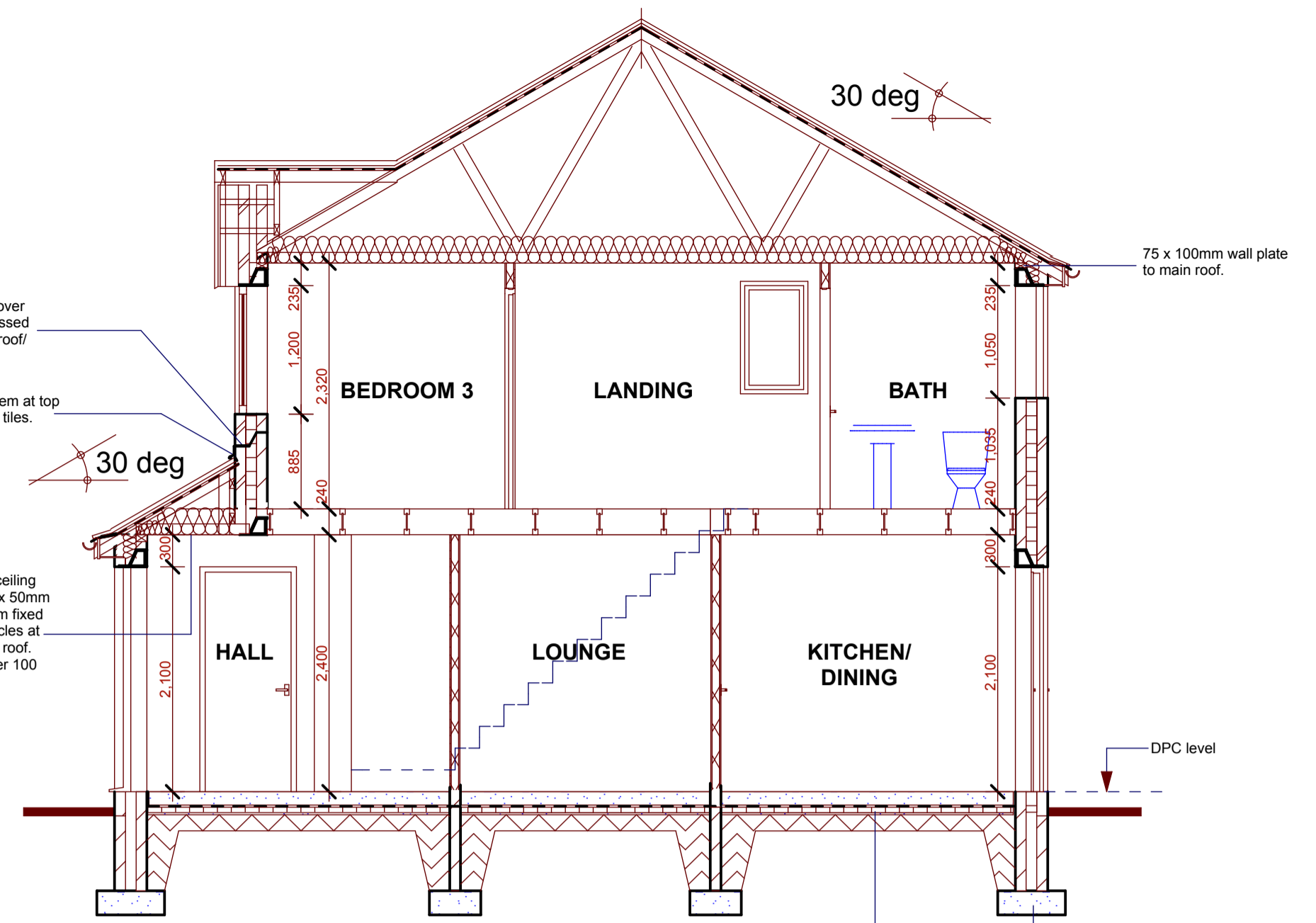




FRONT ELEVATION

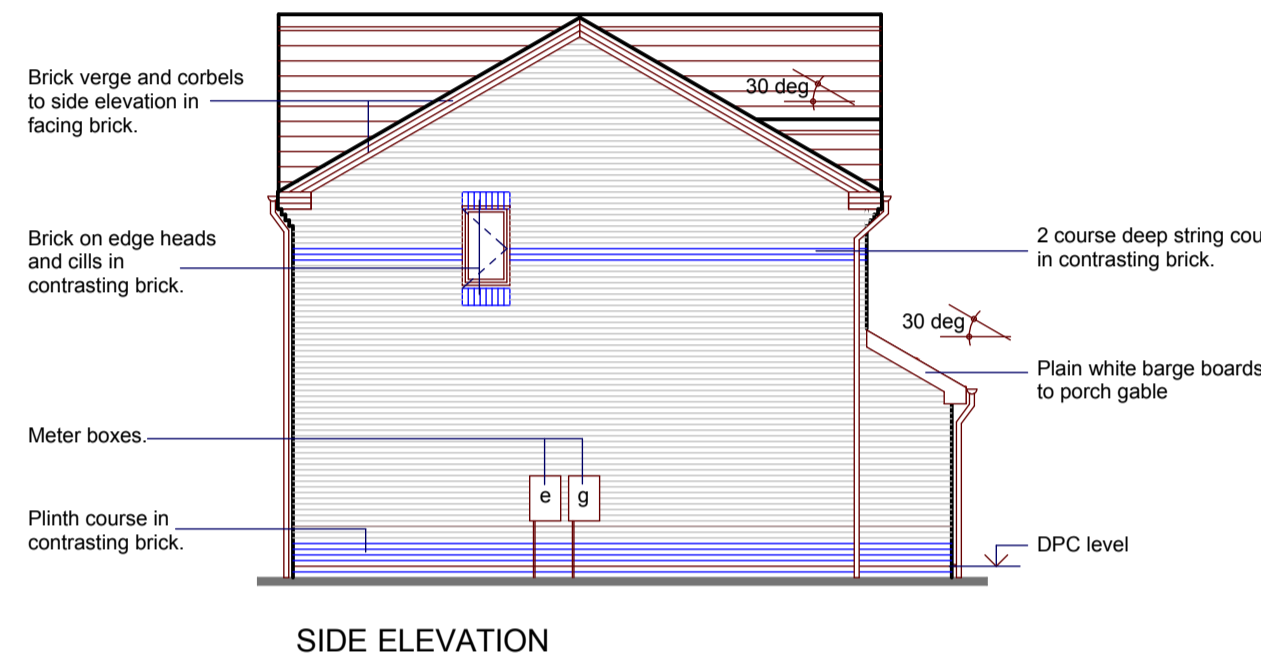


REAR ELEVATION

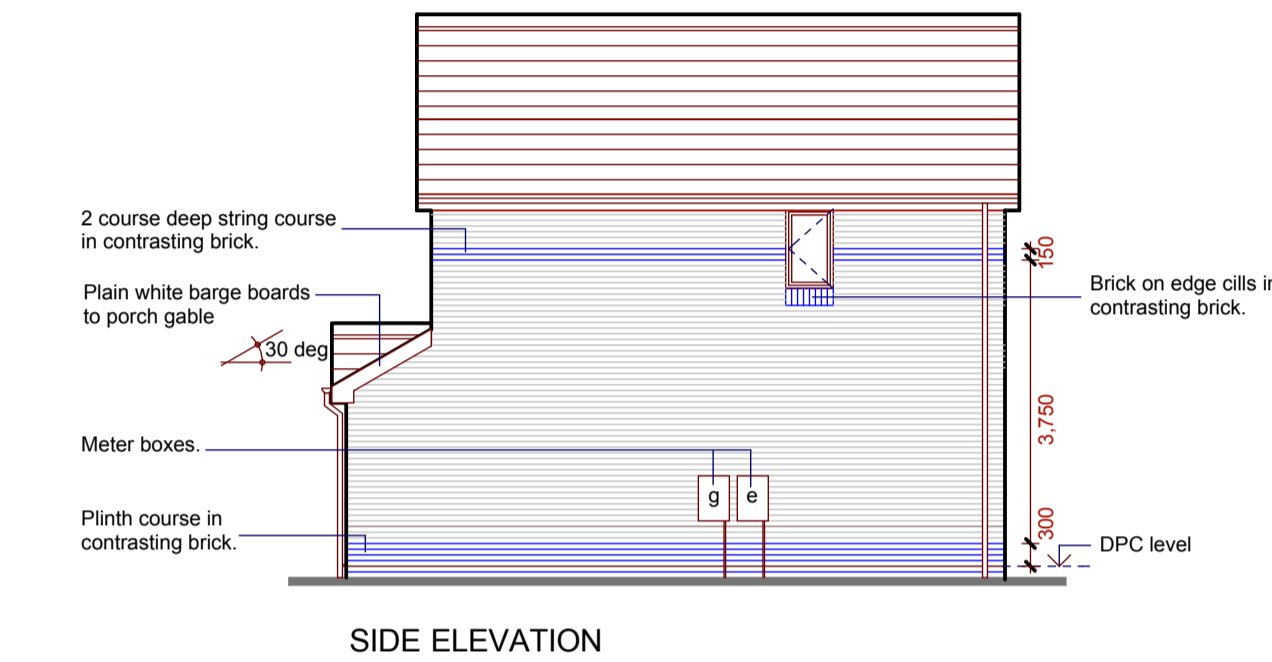


SECTION A-A

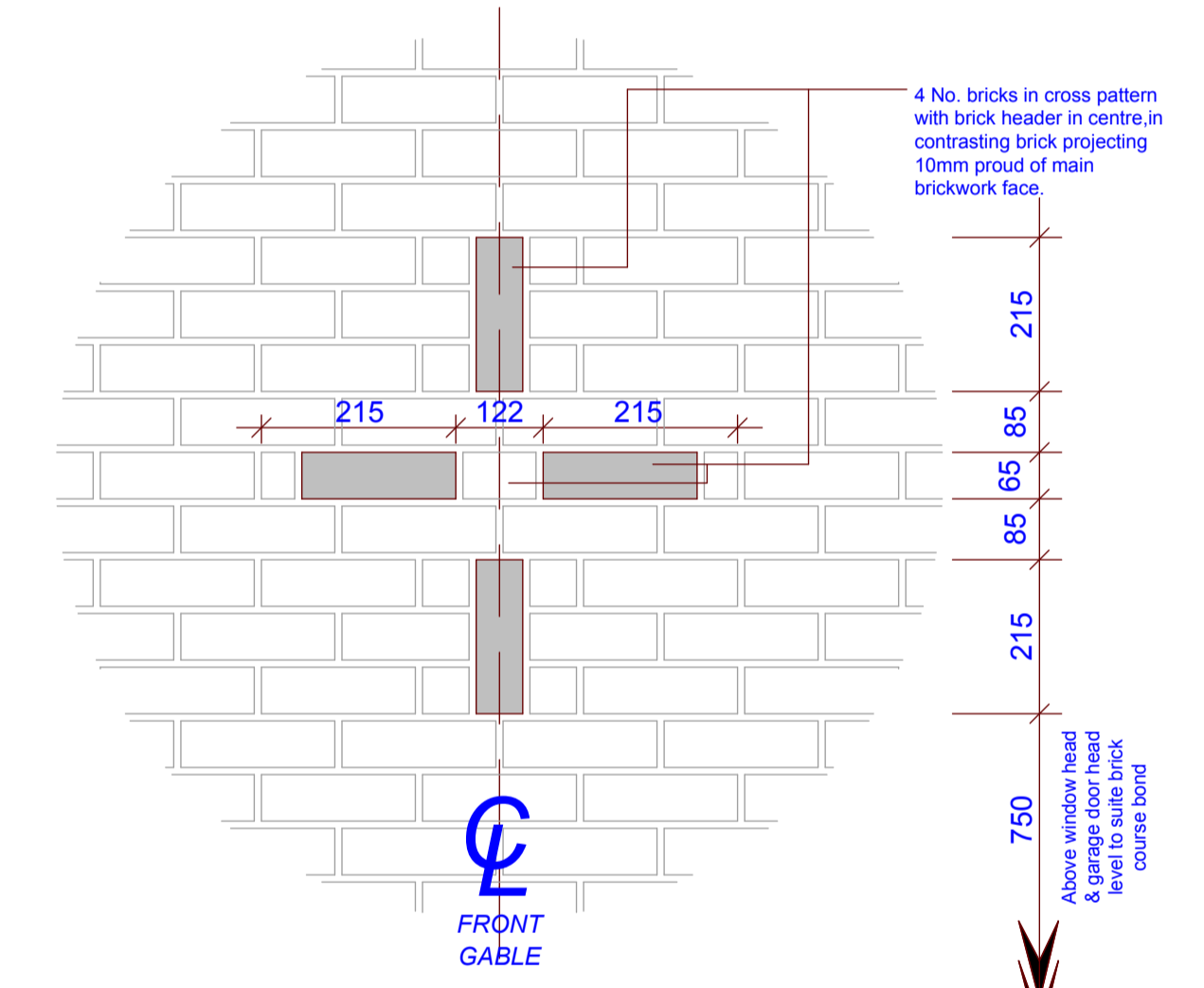
NOTE: See General Construction Notes for foundation and ground floor specification - varies on different development sites.



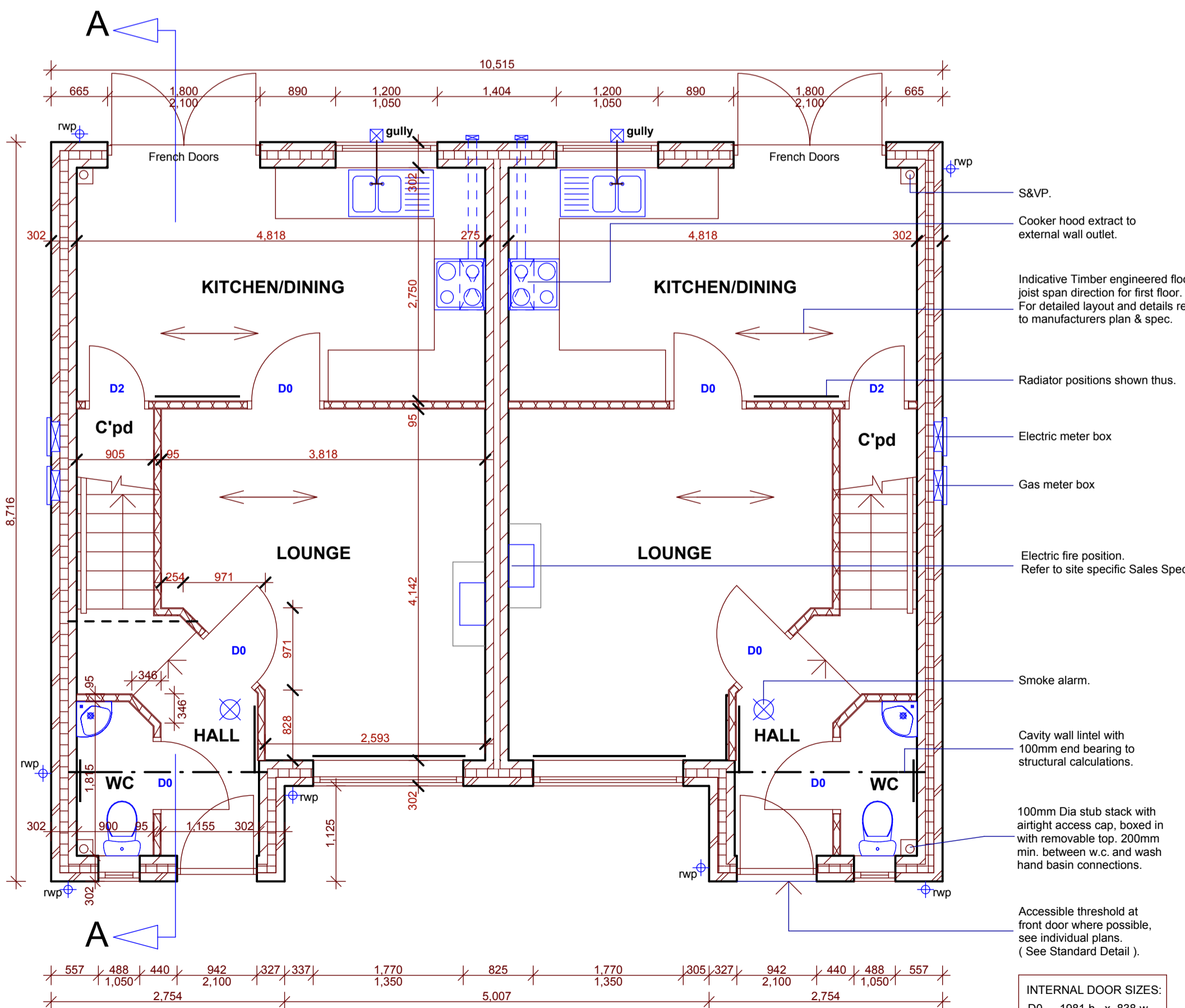
SIDE ELEVATION



SIDE ELEVATION

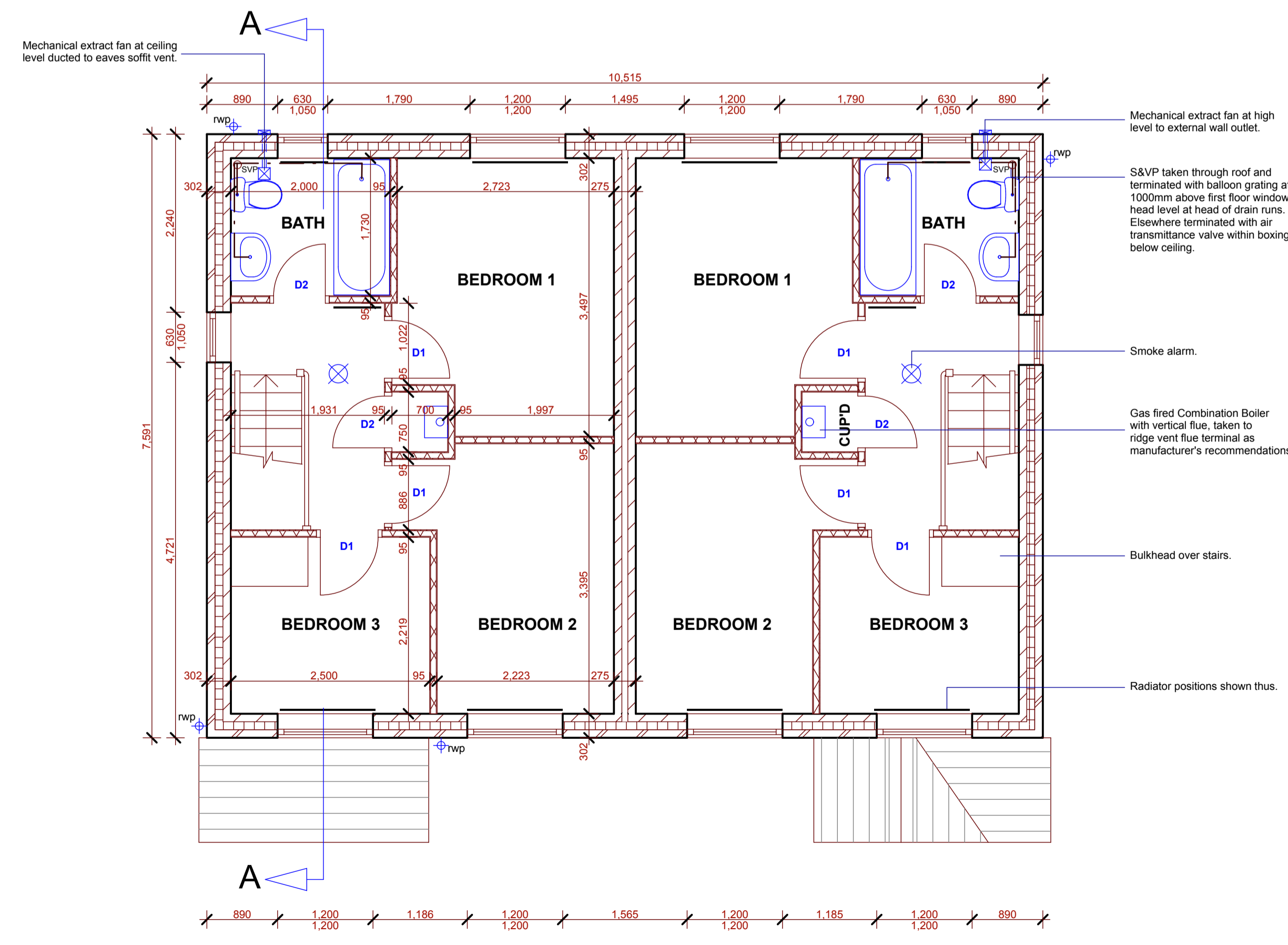


BRICK FEATURE DETAIL. 1:10



GROUND FLOOR

INTERNAL DOOR SIZES:  
 D0 - 1981 h. x 838 w.  
 D1 - 1981 h. x 762 w.  
 D2 - 1981 h. x 686 w.  
 D3 - 1981 h. x 610 w.



FIRST FLOOR

Rev H - Brick verge & corbel to side elev. RWP moved. FK 09/03/10  
 Rev G - Moved external SVP to internal as standard. JCM 05/03/08  
 Rev F - Changed walls to 302mm. J.C.M. 10/12/07  
 Rev E - Stud walls to GFloor, stub stack to GFloor WC. M.H. 15/07/05  
 Rev D - Doors to Cyl cupboards amended to D2's, heating system M.H. 04/05/04 revised to inc. combi boiler, ovg updated to part E, cavity wall amended. M.H. 13/10/03  
 Rev C - S&VP's relocated & flue blocks staggered. M.H. 13/10/03  
 Rev B - Ext door sizes changed & T.I. jells added. F.K. 09/07/02  
 Rev A - Window styles to front elevation changed. F.K. 23/04/02

**RIPPON HOMES**  
 Leeming Lane South, Mansfield Woodhouse  
 Nottinghamshire, NG19 9AQ  
 Tel: 01623 659000 Fax: 01623 420807

STANDARD WORKING DRAWING

House Type:  
 3S6

Scale: 1:50 & 1:100 Date: February 2002 Revision: H

**FLOOR AREA**  
 69.74 m<sup>2</sup>  
 751 ft<sup>2</sup>