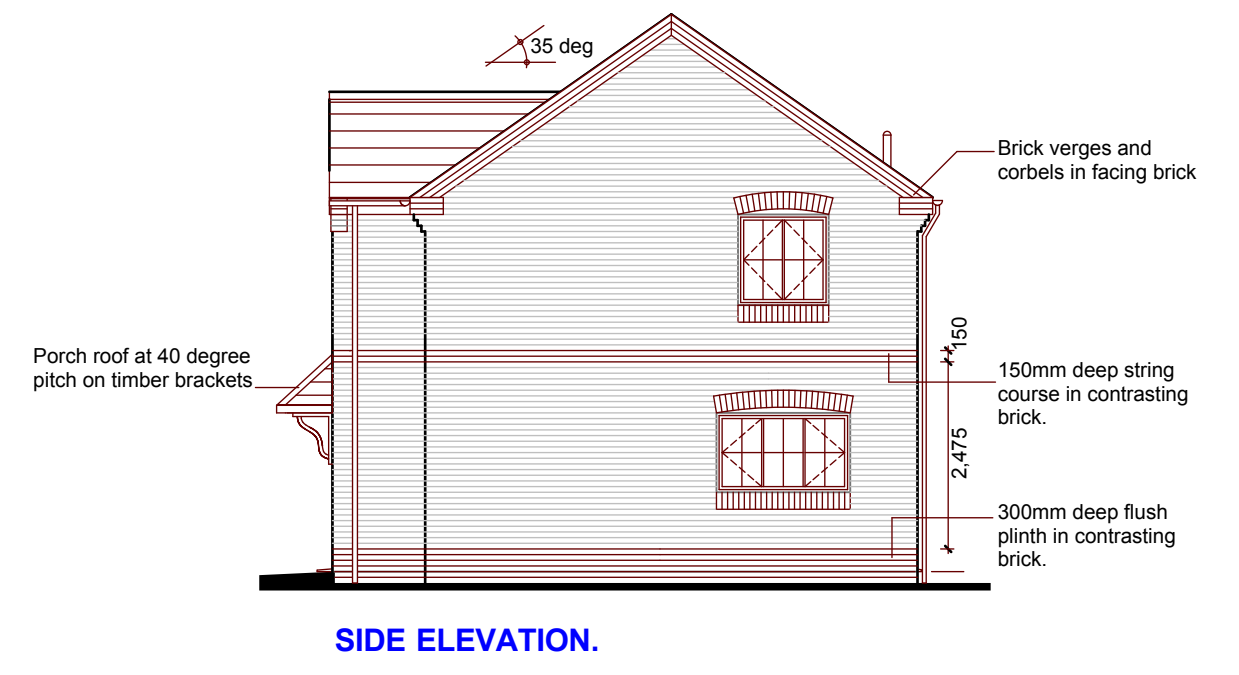
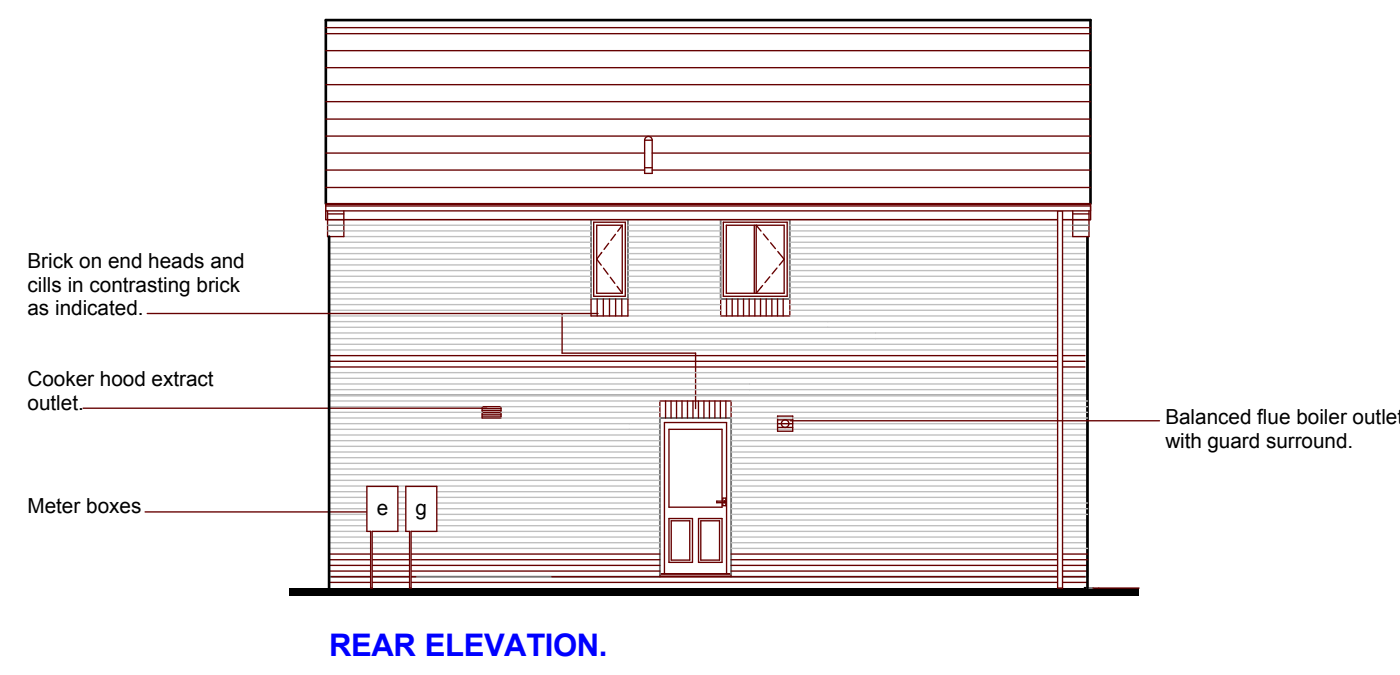


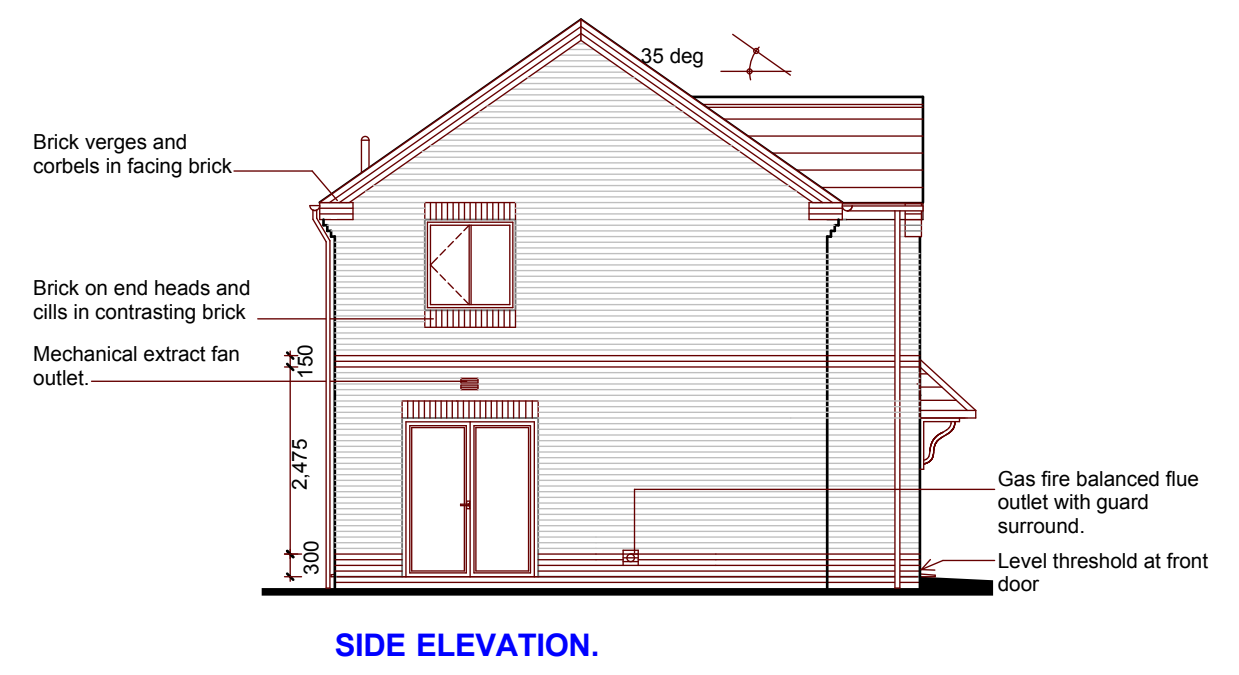
FRONT ELEVATION.



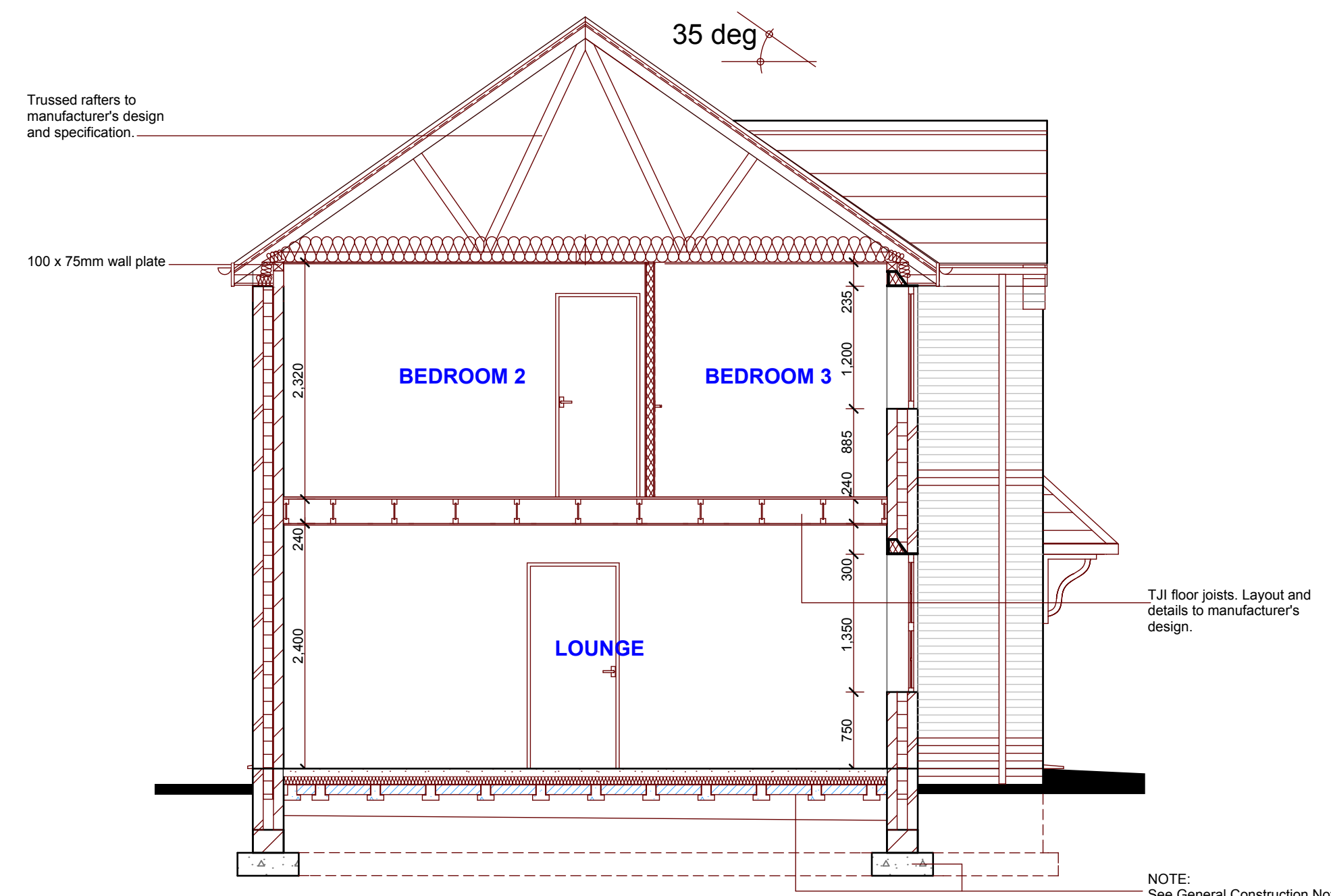
SIDE ELEVATION.



REAR ELEVATION.

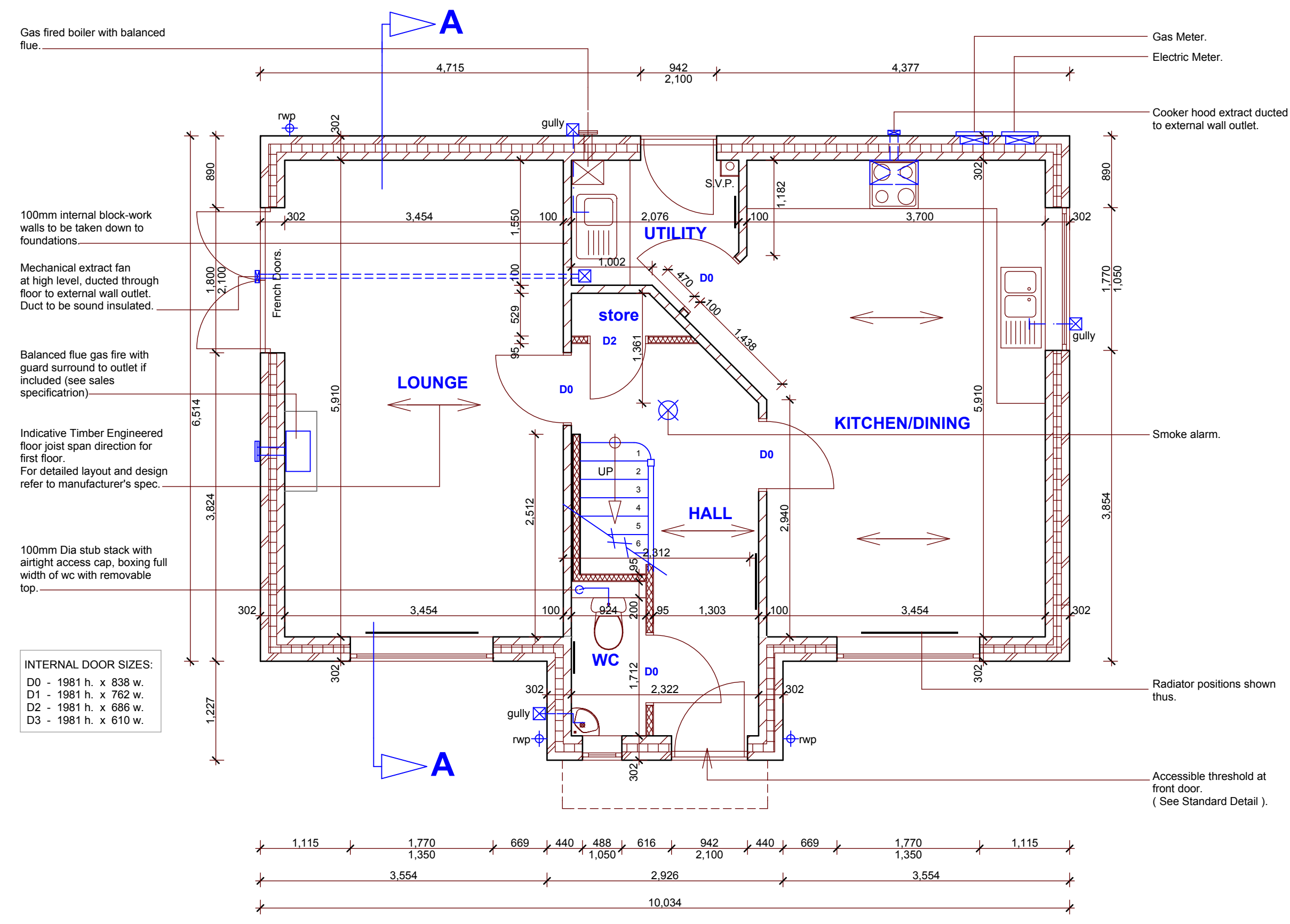


SIDE ELEVATION.

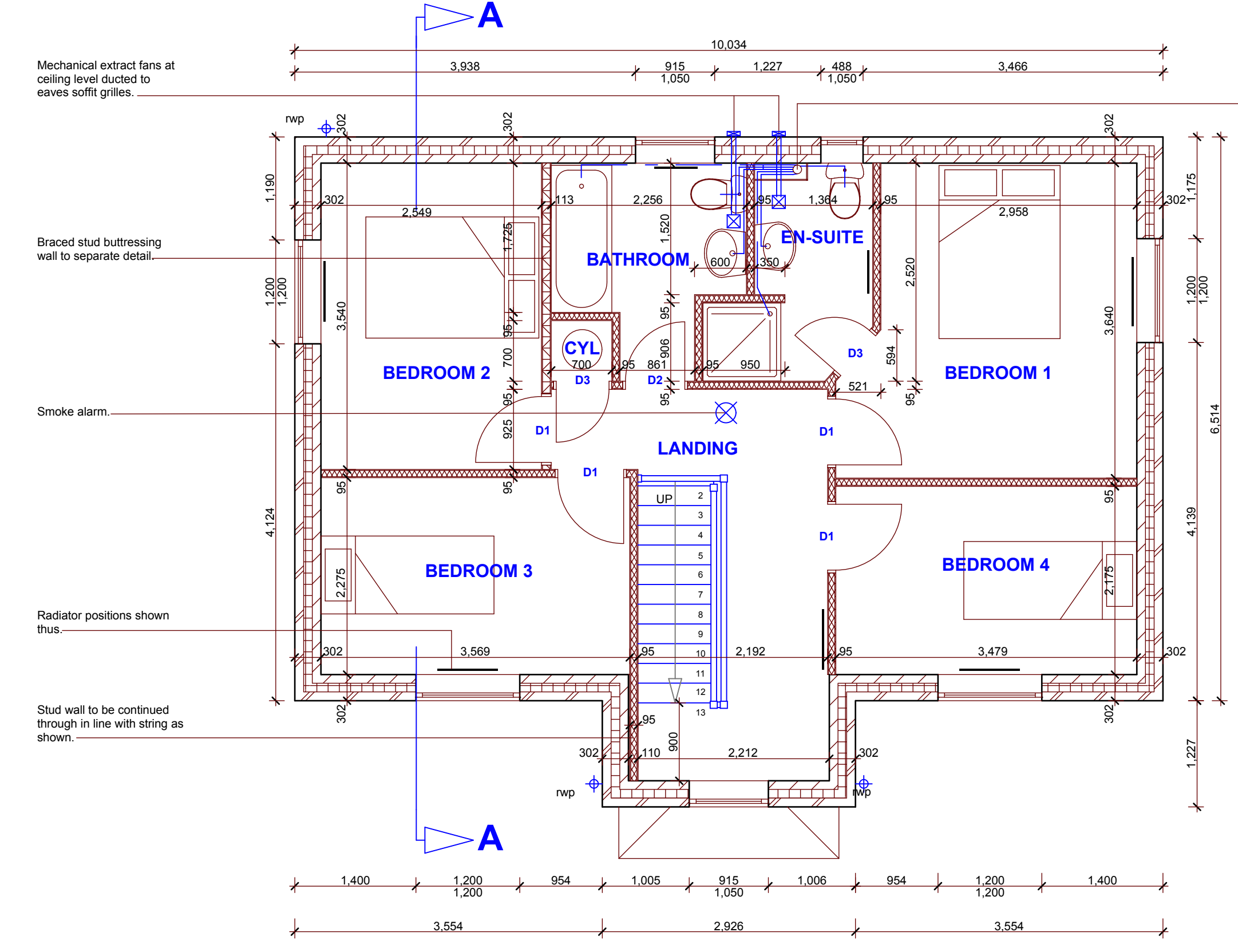


SECTION A - A.

NOTE:
See General Construction Notes for foundation and ground floor specification - varies on different development sites.



GROUND FLOOR PLAN.



FIRST FLOOR PLAN.

S.V.P taken through roof and terminated with balloon grating at 1000mm above first floor window head level at head of drain runs. Elsewhere terminated with Air Admittance Valve within roof space.

Rev A - 01/12/14 (NB) - WC moved in Ground Floor Cloakroom

RIPPON HOMES
Leeming Lane South, Mansfield Woodhouse
Nottinghamshire, NG19 9AQ
Tel: 01623 659000 Fax: 01623 420807

STANDARD WORKING DRAWING

**House Type:
4D36 Special**

Scale: 1:50 Date: July 2014 Revision: A
1:100

FLOOR AREA
117.14 m²
1261 ft²